

SHOWING YOU

the Show-Me State

Government 101

FOR KIDS!

Sponsored by
State Sen. Jill Schupp
& Rep. Tracy McCreery



Sen. Jill Schupp



Rep. Tracy McCreery

Compliments of the Missouri Senate

Showing You...

Your State Government



INSIDE: Learn more about the state of Missouri and how you can get involved in the work of the Legislature!

- 3 How Government Works**
- 4 From Bill to Law**
- 5 Your State Capitol**
- 6 Missouri's State Symbols**
- 7 Get Involved!**

Welcome to Your State Capitol!

Welcome to the Capitol, home to the 34-member Senate and the 163-member House of Representatives that make up the legislative branch of your state government.

The two-chamber, or “bi-cameral,” Legislature is also found in 48 other states (Nebraska has a single legislative body) and in Washington, D.C., our nation’s capital,

where the House and Senate are together known as Congress.

The decisions senators and representatives make daily are important ones. No state road is built, no public school student is taught, no state service is offered and no program is started without a decision first having been made in the Missouri Senate and House.



How State Government Works

To make sure Missouri is led by a strong central government controlled by the will of the people, Missouri's Constitution separates our state government into three branches, each operating independently of the others.

The Judicial Branch

The judicial branch hears legal cases about controversies between people and sometimes determines the guilt or innocence of those charged with a crime. This branch also serves to interpret the laws of the state. The balancing power of the judiciary is that it can rule on the constitutionality of laws passed by the Legislature.

What does a legislator do?

Here are some of the things senators and representatives do to serve their constituents throughout the year:

- 1** During session, state lawmakers meet in the Capitol chambers to introduce their ideas about how they can improve life for Missourians.
- 2** Talk with state officials, constituents and lobbyists about concerns. (This is where lawmakers get most of their ideas for what bills they should introduce.)
- 3** Give speeches to clubs, groups and organizations to update them on what is going on at the State Capitol.
- 4** Talk with constituents about how proposed laws will affect them.
- 5** Help citizens communicate with other state departments.

The Executive Branch

The executive branch has the responsibility of administering the laws after they are approved. This branch is headed by the governor, who can be elected to a maximum of two four-year terms. The executive body also consists of the lieutenant governor, secretary of state, state auditor, state treasurer and attorney general, who are all elected by the people.

The Legislative Branch

STATE SENATE:

There are 34 senators, each representing approximately 174,000 Missourians.

A senator is elected to a four-year term, and at the end of the term, the senator has to be re-elected by the people.

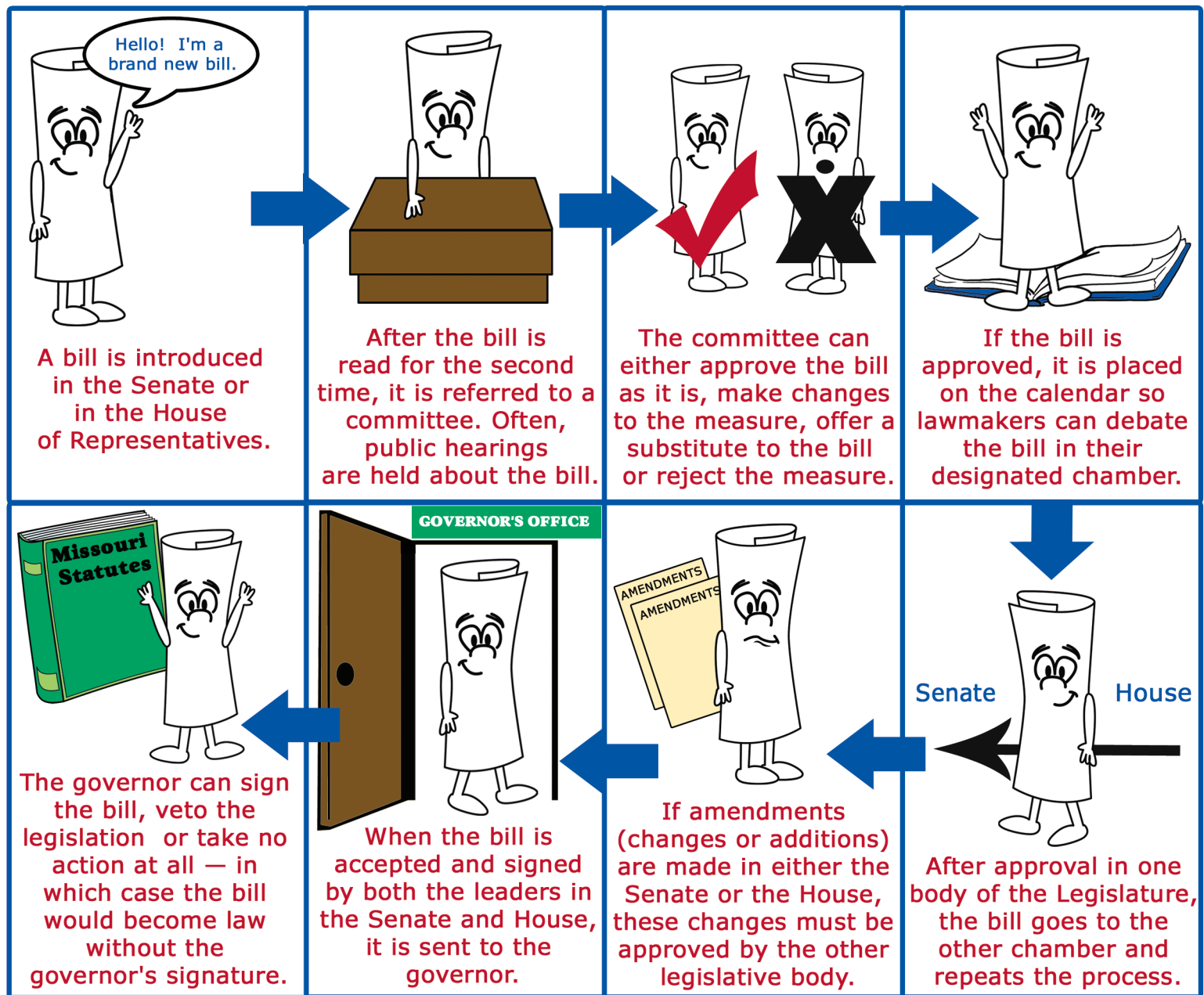
STATE HOUSE:

There are 163 representatives, each representing approximately 36,500 Missourians.

A representative is elected to a two-year term, and at the end of the term, the representative has to be re-elected by the people.

How a Bill Becomes Law

The chart below outlines the journey a bill takes to become law.



Did You Know...

In 1820, our state drew up a constitution and elected and organized a state government months before Missouri was officially recognized as a state.

Missouri has actually had SIX Capitol buildings. The present Capitol building has been occupied since 1917.

The shortest bill introduced in the Missouri Senate was one line long. One of the longest bills introduced was Senate Bill 52 (897 pages) in 1993.

Your State Capitol

The State Capitol was built between 1913 and 1917. The four-story building has 500,000 square feet of space and sits on nearly three acres of land. The structure is a symmetrical building in the Roman Renaissance style, topped with a dome.



The Capitol Rotunda is 65 feet in diameter. It is flanked by a grand marble stair case. Limestone marble also coats all the floors, corridors and stairs of the Capitol.



The Capitol stands on 285 concrete piers that extend up to solid rock. The building is 437 feet long and 200 feet wide.

Thomas Hart Benton is one of the most notable artists from Missouri. His mural, "A Social History of Missouri," is located on the third floor of the State Capitol in the House Lounge.



The Hall of Famous Missourians, located in the Rotunda on the third floor of the State Capitol, honors individuals who have been recognized for their achievement or contribution to the "Show-Me State."



Words to Know...

Filibuster- Prolonged discussion of a bill to delay legislative action.

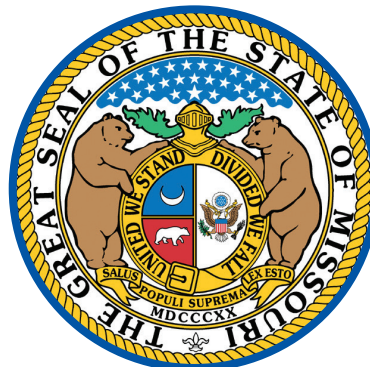
Motion- A statement, verbal or in writing, which urges a particular action by a legislative body.

Sponsor- Legislator who is the primary author of a bill, amendment or resolution.

The Show-Me State

Missouri state symbols reflect a history and culture that sets the state apart from others in the country. Each symbol is either associated with a species native to Missouri, pays tribute to a product that is important to the state's economy or represents a time in our history.

Most state symbols are introduced by the General Assembly. However, some ideas for state symbols come from Missourians just like you. For a full list of state symbols, visit the Missouri Senate Kids' Page.



The General Assembly adopted the Great Seal of Missouri in 1822. It was designed by Judge Robert William Wells.

May 8 is set aside in commemoration of Harry S. Truman — the only native Missourian ever elected as president.



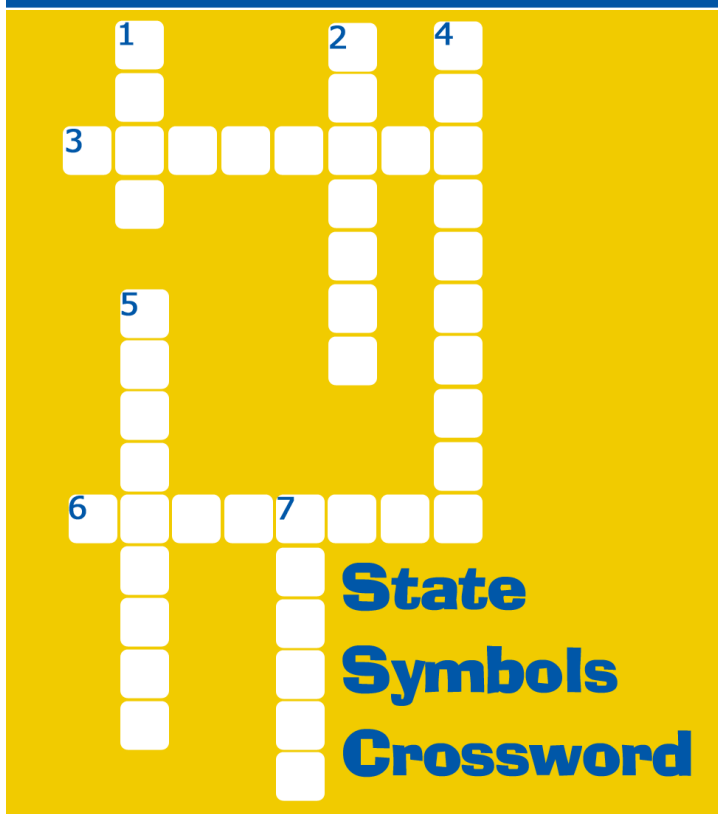
In 1955, the flowering dogwood was chosen as the state tree.



The Missouri fox-trotting horse was bred in the early 19th century. It was named the state horse in 2002.



In 2008, a group of students successfully asked legislators to name the ice cream cone as the state's official dessert.



Do you know Missouri's state symbols?

Test your knowledge with this crossword puzzle.

ACROSS

- 3. The state bird
- 6. The state invertebrate

DOWN

- 1. The state animal
- 2. The state fossil
- 4. The state aquatic animal
- 5. The state rock
- 7. The state instrument

People, Places and Policies Word Find

Get Involved!

T N
 T V
 I P W E
 Y X T D
 J G A U Z T
 W N O G V J
 I Y U O N N L E G I S L A T I O N A F Z
 D U O X H G S M I C Z A S S E M B L Y A
 B S F A C O C T U X S O R G X L L B
 K E Q M H V O C T X Y M H L A W
 Z N K I A E N O I J Q U P X
 W A V S M R S M L D A E
 B F U T J S B N T M A O U S
 I F S M O O O E M I I W P Y
 I L D E K T R R U R E T T M N H
 O L P T G M G R T N U T A S
 C A P I T O L I W T T E K I
 L C A Z I X T I E E
 L P I S Q O P R
 Y R N L

Find these words in the puzzle above:

ASSEMBLY	COMMITTEE	LAWMAKER
BILL	CONSTITUTION	LEGISLATION
CAPITOL	GOVERNMENT	MISSOURI
CHAMBER	LAW	SENATE
		SENATOR

Even though you cannot vote until you are 18 years old, you can still play an important role in the shaping of Missouri laws. If you have a suggestion or comment about our state government, legislators enjoy hearing from their younger constituents.

You can determine who your lawmakers are by using the internet. You can even email your legislators using the email address listed on his or her website.

If you want to meet with your state senator or representative, you should call ahead to make an appointment.

In the meantime, learn all you can about the legislative process and the issues that affect you and your family so that you can become an informed voter. You can make a difference if you just get involved!

Missouri Legislature Matching

Use this book to match the phrase to its description.

- | | |
|---|-------------------|
| 1. The number of senators | a. 3 |
| 2. When the Legislature convenes | b. 2 |
| 3. The number of years per House term | c. 163 |
| 4. Number of branches in state government | d. 34 |
| 5. The number of House members | e. bicameral |
| 6. The type of legislature Missouri has | f. Jefferson City |
| 7. Where the Missouri Capitol is located | g. 4 |
| 8. Number of years per Senate term | h. January |

To learn more about the Missouri Senate visit:

www.senate.mo.gov

More fun facts and puzzles are on the Missouri Senate Kids' Page!

Adrian Advance Affton Agency Alba Albany Aldrich Alexandria Allendale Allenton Alma Altamont Altenburg Alton Amazonia Amity Amoret Amsterdam
Anabel Anderson Annada Annapolis Anniston Appleton City Arbela Arbyrd Arcadia Archie Arcola Argyle Armstrong Arnold Arrow Rock Asbury Ash
Grove Ashburn Ashland Athens Atlanta Augusta Aurora Austin Auxvasse Ava Avalon Avilla Bagnell Bakersfield Ballwin Baring Barnard Barnett Barnhart
Bates City Battlefield Beaufort Bell City Belle Bellevue Bellflower Belton Bendavis Benton Berger Berkeley Bernie Bertrand Bethany Bethel Bevier
Billings Bigelow Birch Tree Bismarck Bixby Black Black Jack Blackburn Blackwater Blackwell Blairstown Bland Blodgett Bloomsfield Bloomsdale Blue
Eye Blue Springs Bluffton Blythedale Bogard Bois D'Arc Bolckow Bolivar Bonne Terre Bonnots Mill Boonesboro Boonville Boss Bosworth Bourbon
Bowling Green Bradleville Bragg City Braggadocio Brandsville Branson Branson West Brashear Braymer Brazeau Breckenridge Brentwood Briar
Bridge Brookfield Brown Brownwood Brumley Brunswick Bucklin Buckner
Bucyrus Cainsville Cairo Caledonia Calhoun California Callao
Camden Mills Cardwell Carl Junction Carrollton Cartersville
Carthage Cardcreek Center Centertown Centerview Centerville
Centralia Chowee Chillicothe Chula Clarence Clark Clarksburg
Clarksdale Clinton Clubb Clyde Coatsville Coffey Coffman Cole
Camp Collins Conway Cook Station Cooter Corder Cosby Cottleville
Couch Cowgill City Cuba Curryville Dadeville Daisy Dalton Danville
Darlington Davis Defiance Delassus Delta Denver Des Arc Des Peres
Desloge Devil's Elbow Dover Downing Drexel Drury Dudley Duenweg Duke
Dunnegan Durham Edgar Springs Edgerton Edina Edwards El Dorado
Eldon Springs Eldon Eminence Emma Eolia Ethel Eureka Everton Ewing
Excelsior Springs Exeter Fagus Fair Grove Fair Play
Fairdealing Fairfax Ferrelview Festus Fillmore Fisk Flemington
Fletcher Flinthill Florissant Fortuna Foster Frankford Franklin
Fredericktown Freeburg Galena Gallatin Galt Garden City
Garrison Gasconade Gateway Glenallen Glencoe Glenwood Glover
Gobler Golden Golden City Granby Grandin Grandview Granger
Grant City Grassy Gravois Greenwood Grover
Grovespring Grubville Gumma Harris Harrisburg Harrisonville
Hartsburg Hartshorn Harrison Hazelwood Helena Hematite
Henly Henrietta Herculean Hiram Holcomb Holden
Holland Holliday Hollister Humansville Hume
Humphreys Hunnewell Ironton Isabella Jackson
Jacksonville Jadin Jameson Joplin Kahoka Kaiser Kansas
City Kearney Kelso Kennett Kingsville Kinloch Kirbyville
Kirksville Kirkwood Kissee La Monte La Plata La Russel
Labadie Laclede Laddonia La Roche Lanagan Lancaster Laquey
Laredo Latham Lathrop Leonard Leopold Leslie
Lesterville Levasy Lewistown Lock Springs Lockwood Lodi
Lohman Lone Jack Londell Lynchburg Macks Creek
Macomb Macon Madison Marquette Marquand Marshall
Marshfield Marston Marthasville McBride McClurg McFall
McGee McGirk Meadville McMillan Milford Mill
Spring Miller Millersville Monticello Montier
Montreal Montrose Moody Mount Pleasant Mount
Moriah Mount Sterling Mount Vernon Nevada New
Bloomfield New Boston New London New York
New Madrid Mew Melle Nevada County North
Kansas City Norwood Novelsky Olney Oran Oregon Oronogo
Paris Park Hills Parkville Philadelphia Phillipsburg Pleasant Hope Pleasant Valley
Portageville Portland Potosi Portageville Portland Potosi
Ravenwood Raymondville Richmond Richland Richmond
Rock Port Rockaway Beach Rockville Rueter Rush Hill Rushville
Sedalia Sedgewickville Seligman Senath Seneca Seymour Shelbyville Sheldon Shell Knob Sheridan Shook Shrewsbury
Skidmore Slater Smithton Smithville Solo South Fork South Greenfield South West City Sparta Spickard Spokane Springfield
St. Charles St. Elizabeth St. Francisville St. James St. John St. Joseph St. Louis St. Mary St. Patrick St. Paul St. Peters St. Robert
Stanton Stark City Ste. Genevieve Steedman Stelle Steelville Steffenville Stella Stet Stewartville Stockton Stotts City Stoutland
Strasburg Sturdivant Sturgeon Success Sugar Creek Sullivan Summersville Sumner Sunrise Beach Sunset Hills Swedeborg
Tallapoosa Taneyville Taos Tarkio Taylor Tea Tebbetts Tecumseh Teresita Thayer Theodosia Thompson Thornfield Tiff Tipton
Town and Country Tracy Treloar Trenton Trimble Triplett Troy Truxton Tunas Turners Turney Tuscumbia Udall Ulman Union Union Star Uniontown
Unionville University City Urbana Ulrich Utica Valles Mines Valley Park Van Buren Vandalia Vanduser Vanzant Verona Versailles Viburnum Vichy Vienna
Villa Ridge Vista Vulcan Waco Wakenda Waldron Walker Walnut Grove Walnut Shade Wappapello Wardell Warrensburg Warrenton Warsaw Warson
Woods Washburn Washington Wasola Watson Waverly Wayland Waynesville Weatherby Weaubleau Webb City Webster Groves Weldon Spring
Wellington Wellsville Wentworth Wentzville Wesco West Alton West County West Plains Westboro Weston Westphalia Wheatland Wheaton Wheeling
Whiteoak Whiteside Whitewater Wildwood Willard Williamsburg Williamstown Williamsville Willow Springs Winchester Windsore Windyville
Winfield Winigan Winona Winston Wolf Island Woodson Terrace Wooldridge Worth Worthington Wright City Wyanconda Wyatt Yukon Zalma Zannoni

