

Electric Rate Cases

<i>Ameren Missouri Rate Requests</i>			
Date Request Filed	Date of Decision	Amount of Request	Rate Case Decision
7/1/2016		\$206.4m	Hearing in February/March 2017
7/3/2014	4/29/2015	\$264.1m	\$121.5m
2/3/2012	12/12/2012	\$375.6m	\$259.6m
9/3/2010	7/13/2011	\$263m	\$172m
7/4/2009	5/28/2010	\$402m	\$226.30m
4/4/2008	1/27/2009	\$251m	\$162.6m
7/7/2006	5/22/2007	\$360.7m	\$41.8m

Under an agreement approved by the Commission on July 25, 2002, AmerenUE reduced electric rates as follows:

Effective Date of Reduction	Amount of Reduction
April 1, 2004	\$30m
Fall 2002	\$40m
April 2002	\$50m

The electric rates for AmerenUE were reduced by approximately \$16m in 2000 to reflect increased earnings. The decrease applied primarily to large class customers.

Electric Rate Cases

<i>Kansas City Power & Light Company</i>			
Date Request Filed	Date of Decision	Amount of Request	Rate Case Decision
7/01/2016		\$90.1m	Hearing in February 2017
10/30/2014	9/2/2015	\$120.9m	\$89.7m
2/27/2012	1/9/2013	\$105.76m	\$67.4m
6/4/2010	4/12/2011	\$92.1m	\$34.8m
9/5/2008	6/10/2009	\$102m	\$95m
2/01/2007	12/6/2007	\$45m	\$35.5m
2/01/2006	12/21/2006	\$55.8m	\$50.6m

Electric Rate Cases

<i>KCP&L Greater Missouri Operations (MPS & L&P) Rate Requests</i>			
Date Request Filed	Date of Decision	Amount of Request	Rate Case Decision
2/23/2016		\$59.3m	Hearing in September
2/27/2012	1/9/2013	\$83.5m	\$47.9m
6/4/2010	5/4/2011	\$97.9m	\$57.8m

<i>KCP&L Greater Missouri Operations (MPS) Rate Requests</i>			
Date Request Filed	Date of Decision	Amount of Request	Rate Case Decision
9/5/2008	7/30/2009	\$66m	\$48m
7/3/2006	12/6/2007	\$94.5m	\$45.3m
5/24/2005	12/21/2006	\$69.2m	\$38.5m
7/3/2003	4/13/2004	\$65m	\$14.5m
6/8/2001	12/11/2002	\$49.3m	<\$4.2m>

<i>KCP&L Greater Missouri Operations (L&P) Rate Requests</i>			
Date Request Filed	Date of Decision	Amount of Request	Rate Case Decision
9/5/2008	7/30/2009	\$17.1m	\$15m
7/3/2006	12/6/2007	\$24.4m	\$13.6m
5/24/2005	12/21/2006	\$9.6m	\$6.3m
7/3/2003	4/13/2004	\$14.6m	\$3.25m

In 2000, the PSC ordered St. Joseph Light & Power Company (L&P) to implement a rate decrease of approximately \$2.5m.

Electric Rate Cases

<i>Empire District Electric Company</i>			
Date Request Filed	Date of Decision	Amount of Request	Rate Case Decision
10/16/2015	8/10/2016	\$33.4m	\$20.4m
8/29/2014	6/24/2015	\$24.3m	\$17.1m
7/5/2012	2/27/2013	\$30.7m	\$27.5m
9/28/2010	6/1/2011	\$36.8m	\$18.68m
10/29/2009	8/18/2010	\$68.2m	\$46.8m
10/01/2007	7/30/2008	\$34.7m	\$22m
2/1/2006	12/21/2006	\$29.5m	\$29.3m
4/30/2004	3/10/2005	\$38.3m	\$25.7m

As a result of an agreement approved by the Commission in 2002, Empire District Electric Company saw an \$11m increase in revenues, but due to the elimination of an interim energy charge, customer bills declined.

Natural Gas Rate Cases

<i>Ameren Missouri Rate Requests</i>				
Date Rate Request Filed	Date Of Decision	Amount of Request	Rate Case Decision	Comments
02/18/2000	10/17/2000	\$12m	\$4.2m	
05/23/2003	1/13/2004	\$26.7m	\$13m	
08/1/2003	4/20/2004	\$5.6m	\$2.6m	This rate increase was part of an Aquila gas rate case where part of the rate increase went to the Rolla district purchased by Ameren around the time of the rate case
07/07/2006	3/15/2007	\$11m	\$6m	
06/11/2010	1/19/2011	\$11.9m	\$5.6m	

<i>Missouri Gas Energy Rate Requests</i>			
Date Rate Request Filed	Date Of Decision	Amount of Request	Rate Case Decision
11/07/2000	7/5/2001	\$39.4m	\$8.9m
11/03/2003	9/21/2004	\$44.9m	\$22.4m
05/01/2006	3/22/2007	\$41.7m	\$27.2m
04/01/2009	2/10/2010	\$32.4m	\$16.2m
09/16/2013	4/23/2014	\$23.4m	\$7.8m

<i>Laclede Gas Company Rate Requests</i>			
Date Rate Request Filed	Date Of Decision	Amount of Request	Rate Case Decision
01/25/2002	11/8/2002	\$36.09m	\$14m
02/18/2005	9/30/2005	\$34m	\$8.5m
12/01/2006	7/19/2007	\$53m	\$38.6m non-gas revenues
12/4/2009	8/18/10	\$60.7m	\$20.5m non-gas revenues
12/21/2012	6/26/13	\$58.4m	\$0.00

Natural Gas Rate Cases

<i>Summit Utilities (Current Name) Missouri Gas Utility and Southern MO Gas Company Rate Requests</i>			
Date Rate Request Filed	Date Of Decision	Amount of Request	Rate Case Decision
08/29/2007	3/20/2008	\$443,000	\$301,000
05/21/2010	1/14/2011	n/a	\$1.3m
01/02/2014	10/29/2014	\$7.5m	\$7.1

<i>Currently owned by Liberty Utilities /Atmos Energy Corporation Rate Requests</i>			
Date Rate Request Filed	Date Of Decision	Amount of Request	Rate Case Decision
04/07/2006	2/22/2007	\$3.4m	Straight Fixed Variable Rate
12/28/2009	8/8/2010	\$6.4m	\$4.6m
02/06/2014	12/3/2014	\$7.6m	\$4.87m

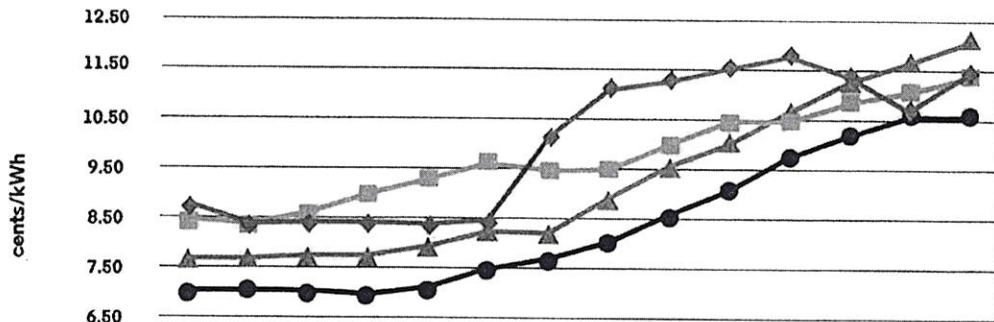
<i>Empire District Gas Company Rate Requests</i>				
Date Rate Request Filed	Date Of Decision	Amount of Request	Rate Case Decision	Comments
08/1/2003	4/22/2004	\$5.6m	\$2.6m	This rate increase was part of an Aquila gas rate case where part of the rate increase went to the MPS and L&P districts of Aquila Networks. Empire purchased these districts from Aquila
06/05/2009	1/20/2010	\$2.9m	\$2.6m	(This is the first rate increase for Empire Gas since its purchase of the Aquila properties)

Water Utility Rate Cases

Missouri-American Water Company				
Date Request Filed	Effective Date of Commission Decision	Effective Date of Tariffs	Amount Requested	Rate Case Decision
7/31/2015	6/25/2016	7/20/2016	\$51.0m	\$30.4m (\$25.1m ISRS)
6/30/2011	3/16/2012	4/1/2012	\$42.9m	~\$24m (\$3.6m ISRS)
11/20/2009	6/18/2010	7/1/2010	\$48.5m	~\$28m (\$5.8m ISRS)
3/31/2008	11/24/2008	11/28/2008	\$49.6m	\$34.5m (\$2.6m ISRS)
12/15/2006	10/14/2007	10/22/2007	\$41.4m	\$28.5 m (\$7m ISRS)
5/19/2003*	4/16/2004	4/16/2004	\$20 mil	\$350,000 decrease
10/15/1999	9/14/2000	9/20/2000	\$16.4 mil	\$10.3 mil

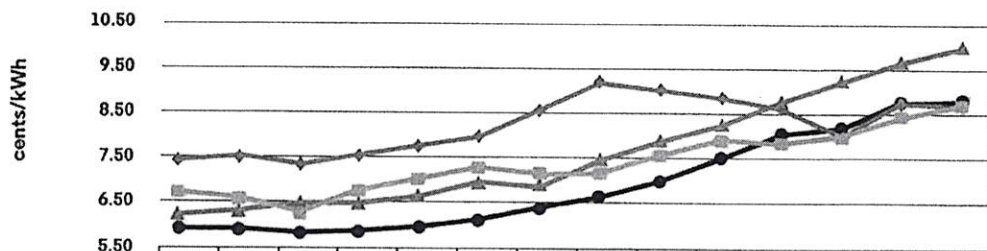
*ISRS took effect after the 2003 rate case.

Residential Average Electricity Price 2001-2014



	2001	2002	2003	2004	2005	2006	2007	2008	2009	2010	2011	2012	2013	YTD 2014	2014	2015
Illinois	8.71	8.39	8.38	8.37	8.34	8.42	10.12	11.07	11.27	11.52	11.78	11.37	10.67	11.41	11.91	12.49
Iowa	8.41	8.35	8.57	8.96	9.27	9.63	9.45	9.49	9.99	10.42	10.46	10.82	11.05	11.35	11.16	11.87
Kansas	7.66	7.67	7.71	7.74	7.90	8.25	8.19	8.89	9.53	10.03	10.65	11.24	11.64	12.13	12.17	12.31
Missouri	7.00	7.06	6.96	6.97	7.08	7.44	7.69	8.00	8.54	9.08	9.75	10.17	10.60	10.59	10.64	10.99

Commercial Average Electricity Price 2001-2014



	2001	2002	2003	2004	2005	2006	2007	2008	2009	2010	2011	2012	2013	YTD 2014	2014	2015
Illinois	7.40	7.52	7.30	7.54	7.75	7.95	8.57	9.25	9.04	8.88	8.64	7.99	8.76	8.73	9.26	8.90
Iowa	6.69	6.56	6.24	6.75	6.95	7.29	7.11	7.18	7.55	7.91	7.85	8.01	8.44	8.74	8.67	9.05
Kansas	6.20	6.28	6.42	6.45	6.60	6.96	6.83	7.44	7.87	8.25	8.78	9.24	9.68	10.03	10.13	9.99
Missouri	5.89	5.88	5.78	5.80	5.92	6.08	6.34	6.61	6.96	7.50	8.04	8.20	8.80	8.82	8.90	9.02

Industrial Average Electricity Price 2001-2014

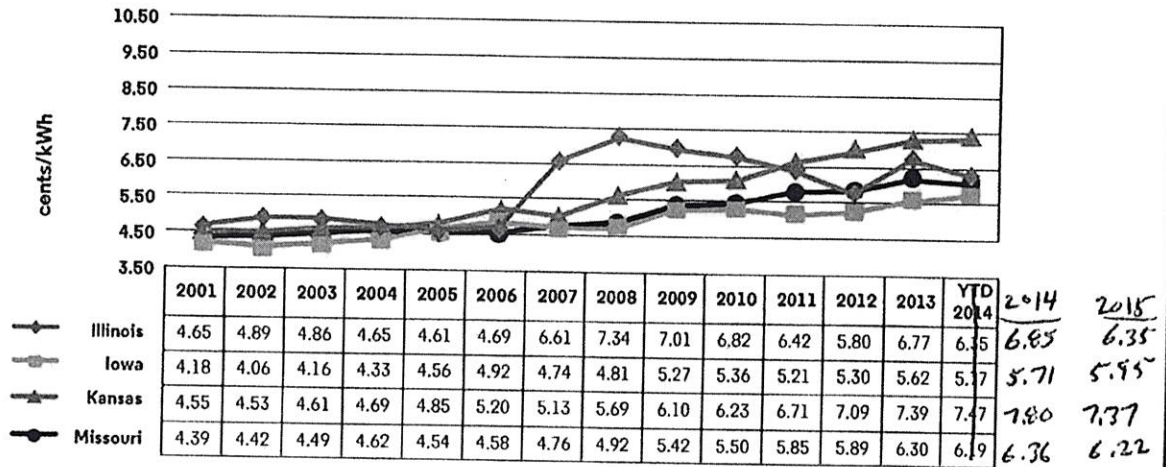


Figure 4. Average Retail Price of Electricity by End-Use Sector for Missouri and Comparison Group, 2001-2014.

Source: (2001-2013 data): U.S. EIA, "Electricity Data Browser," accessed March 2015, <http://www.eia.gov/electricity/data/browser/Source> (Dec. 2014 data): Table 5.6.B. for Dec. 2014 (Electric Power Monthly) Forms EIA-861 and EIA-826.

2. Natural Gas Snapshot

In Missouri, natural gas is used primarily to heat residential and commercial buildings. As mentioned previously, the electric power sector consumes large quantities of natural gas to generate electricity and the transportation sector uses relatively low volumes of natural gas in the operation of pipelines, primarily in compressors, and as vehicle fuel. In 2013, Missourians consumed 277 billion cubic feet (BCF)¹⁵ of natural gas for which they paid a total of \$2.4 billion¹⁶ or the equivalent of \$401 per capita. Missouri ranks 20th in the nation in terms of natural gas expenditures and its annual natural gas

consumption relative to its GSP equates to approximately 1.00 cubic feet (CF)/\$GSP.¹⁷

Over half of Missouri households use natural gas to heat their homes, which makes the state's residential sector the largest consumer of natural gas, accounting for 38.3 percent of total statewide consumption – See Figure 5. The commercial and industrial sectors, which require natural gas to heat buildings but also to manufacture products, account for 23.3 and 22.8 percent of statewide natural gas consumption, respectively.