



State Senator JOAN BRAY

Serving the People
of the 24th District
in the Missouri Senate

2010 End-of-Session Newsletter



Dear Neighbor,

I am writing this end-of-session report as your state senator for the last time. At the end of this year I will leave office having completed two terms, the limit allowed under the Missouri Constitution. I appreciate the time the voters gave me to serve. It has been an honor and privilege to try to do my best representing you in the General Assembly.

The 2010 Second Regular Session of the 95th General Assembly ended at 6 p.m. on Friday, May 14. It was probably the most muted, lowest-key session in my 18 years in the Legislature. I believe that everyone was sobered by the condition of the economy and its impact on the state's budget.

For the second year in a row – and the second time this decade – general revenue is below that of the previous year, for an approximate loss of 16 percent over the two years. Last year the governor and the Legislature agreed on a pared down spending plan to meet this year's revenue estimate. And this year, by January, when the governor presented an even slimmer budget, it soon became clear that not only was revenue not meeting this year's estimate, the estimate for next year was already too optimistic.

Thereby, the governor and the Legislature agreed that some \$500 million more needed to be trimmed from next year's general revenue budget. In addition, the governor asked the Legislature to pass legislation that would increase revenue through such actions as changing state employee retirement, combining agencies and giving the Department of Revenue more means to collect taxes. In the end, few of the revenue-enhancing measures passed. The governor will have either to line-item veto the budget bills or withhold spending until – if – revenue increases.

The storm cloud overhead, though, is the Fiscal Year 2012 budget. This year and next, general revenue has been shored up by \$1.9 billion in federal stabilization money for education and health care. The following year that money will be gone and the state will face about a \$1 billion short-fall. At some point, Missourians – and their leaders – must realize that the state needs new revenue. Cutting basic services such as psychiatric emergency rooms in next year's budget is unacceptable.

Many people ask me how I feel about term limits. The first year I was elected to the Missouri House of Representatives – in 1992 – was the year the voters passed term limits. I have known for my entire career in the Legislature that I would have to leave, so I built that into my mindset. I am suffering no regrets or nostalgia.

From my perspective, term limits have had a negative effect on Missouri state government. During my time in the Legislature I have seen the House and the Senate become more partisan, more divided – even within parties – and less committed to reaching compromise for the good of Missouri. Politics is a social science and it depends on relationships to be successful. Many legislators feel they don't have time to invest in relationships with people with whom they may serve only a short time. Many come into the House or Senate more concerned about making their mark quickly than working with colleagues.

I am grateful for the support of my family over the years; for my excellent staff, who have served the district and me unselfishly; and for the legislative staff, who are ultimate professionals. The joy in serving has come from individual friendships with colleagues and, most of all, relationships with constituents.

I have been humbled by the voters electing me, then re-electing me, and connecting with me and my staff through letters, e-mails, visits, invitations, and general good will and trust. I am in awe of my many constituents and allies who have advocated on behalf of causes that may not have been well received in the Capitol but who were not deterred in pressing their case. I will always remember these years as personally and professionally challenging and fulfilling.

Thank you for your part in enabling me to serve you.

Regards,



Julie Jones
St. Louis County Board of
Election Commissioners

Gina Hoagland
State Lottery
Commission

Nancy Watkins
Public Defender
Commission



Susan Block
Children's Trust
Fund Board

Kevin O'Malley
State Board of Registration
for the Healing Arts

Bruce Manning
Safe Drinking Water
Commission



Marty Vollmar
Missouri Health Facilities
Review Committee

Deborah Onken
State Committee of
Psychologists

Cathy Steele
Missouri Family Trust
Board of Trustees

Gubernatorial Appointments



Eric Battle
Children's Trust
Fund Board



Fred Bronstein
Missouri Workforce
Investment Board



Brian Kelly
Southeast Missouri State
University Board of Regents



Christine Bierman
Missouri Women's
Council



John Morris
Alzheimer's State
Task Force



Ginger Nicol
Drug Utilization
Review Board

State boards and commissions are designed to give citizens a voice in Missouri government and provide a means of influencing decisions that can shape the quality of life for the residents of their district and our state. Participating on a board or commission is one of the most effective steps a citizen can take in becoming an active voice in government.

Missouri has more than 200 boards and commissions to which our governor appoints citizen members. Appointees are responsible for advising the governor, lawmakers in the Senate and House, and state agencies. To find a complete list of boards and commissions, go to the governor's website (www.governor.mo.gov/boards).

To the left are photos of the residents of the 24th Senatorial District who were appointed to serve on a state board or commission in 2010. Several are accompanied by family members.

2010 Reappointments:

- Florence Pullen - Child Abuse Neglect Review Board
- Morey Blinder - Missouri Genetic Advisory Committee
- Gary Gottesman - Missouri Genetic Advisory Committee
- John Newcomer - Drug Utilization Review Board



State Senator Joan Bray

201 W Capitol Ave Rm 431
Jefferson City MO 65101

PRSRT STD
U.S. POSTAGE
PAID
Jefferson City, MO 65101
Permit No. 220

Contact Information

Capitol Office

201 W. Capitol Avenue
Rm. 431
Jefferson City, MO 65101
(573) 751-2514
jbray@senate.mo.gov

District Office (Through June)

8420 Delmar Boulevard
Suite LL4
St. Louis, MO 63124
(314) 340-6582



Jackie
Rost

Administrative
Aide



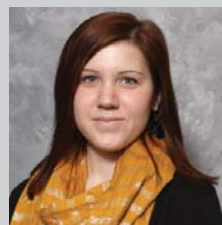
Ellie
Glenn

Legislative
Aide



Tracy
McCreery

District
Aide



Casey
Millburg

Legislative
Intern

2010 Session Bill Information

- * I am pleased that one of my priority bills, Senate Bill 1037, was incorporated into House Bill 1692. My amendment allows cities and counties to form Clean Energy Development Boards to provide loans to property owners to pay for energy efficiency projects.
- * To find bills that passed and were sent to the governor, visit: www.senate.mo.gov (Click on Session Information, then Truly Agreed Bills in the left hand column of the screen).
- * For a PDF version of summaries of the bills sent to the Governor, visit: www.house.mo.gov (Click on Bill Information, then Bill Tracking in the left hand column of the screen, then look for the Bills Truly Agreed and Finally Passed (Summaries) PDF link).
- * To keep an eye on bills the Governor signs, visit: governor.mo.gov/actions
- * To see a list of the bills I filed, visit: www.senate.mo.gov/bray (Click on "Sponsored Bills").